

240 Ave NW

260 St NW

OCSS within yellow boundary

15

Comstock Twp Marshall County

Northern Plains Rail Road

Radium 2 miles west,
3/4 mile south

Do not walk on the north side of the middle of the trail in this area. The landowner will not allow it

Red Gate

DIKE

Snake

14

River

**No motorized
vehicles allowed
on property**

250 St NW

N

220 Ave NW

Warren 1 mile north, 5 miles west



200 St NW

280 Ave NW

McCrea Strip Twp

Comstock Strip Twp

Brislet Twp

Helgeland Twp

**Agassiz Valley
within yellow
boundary**

13

12

18

7

DIKE

68

36

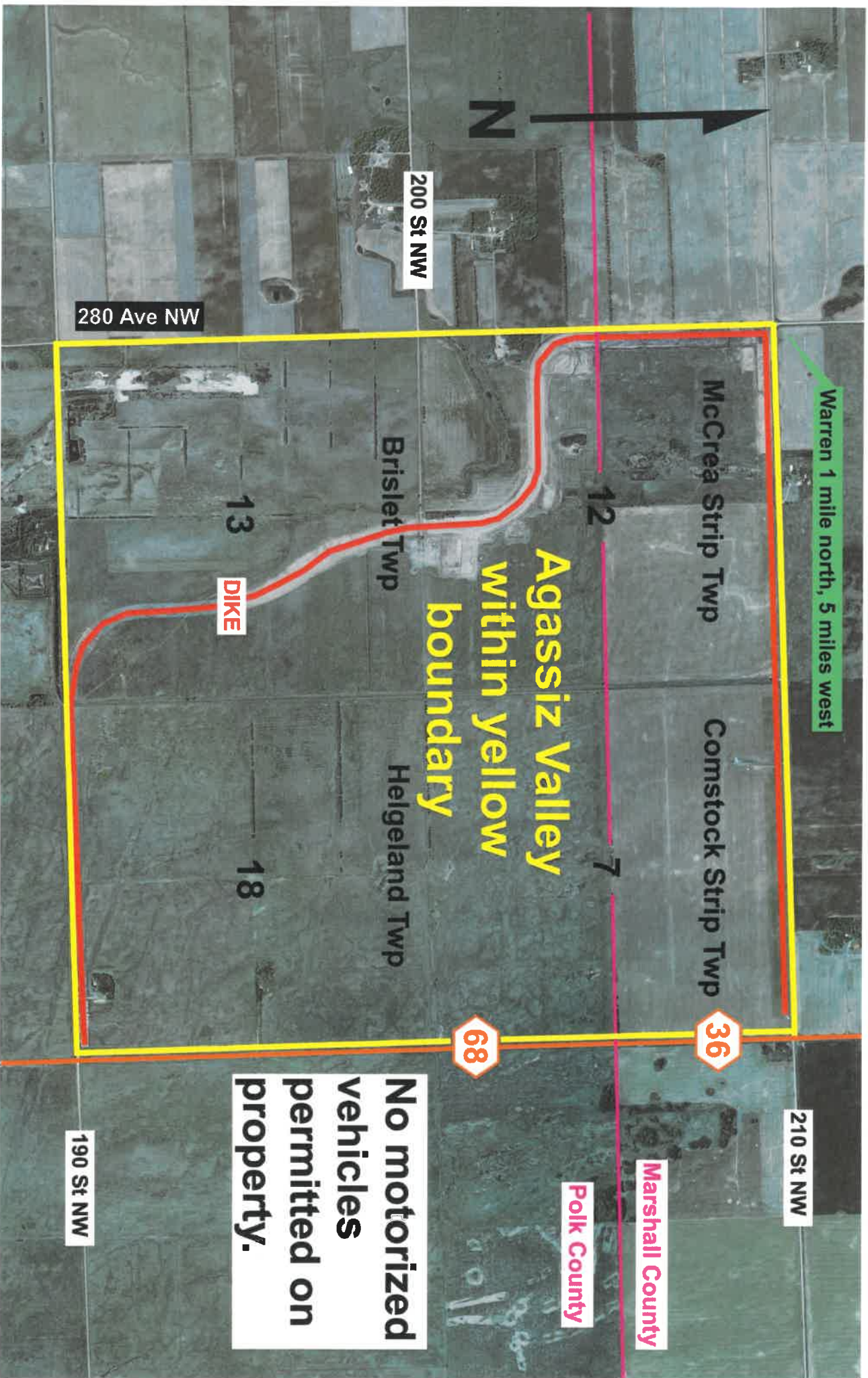
210 St NW

190 St NW

Marshall County

Polk County

**No motorized
vehicles
permitted on
property.**

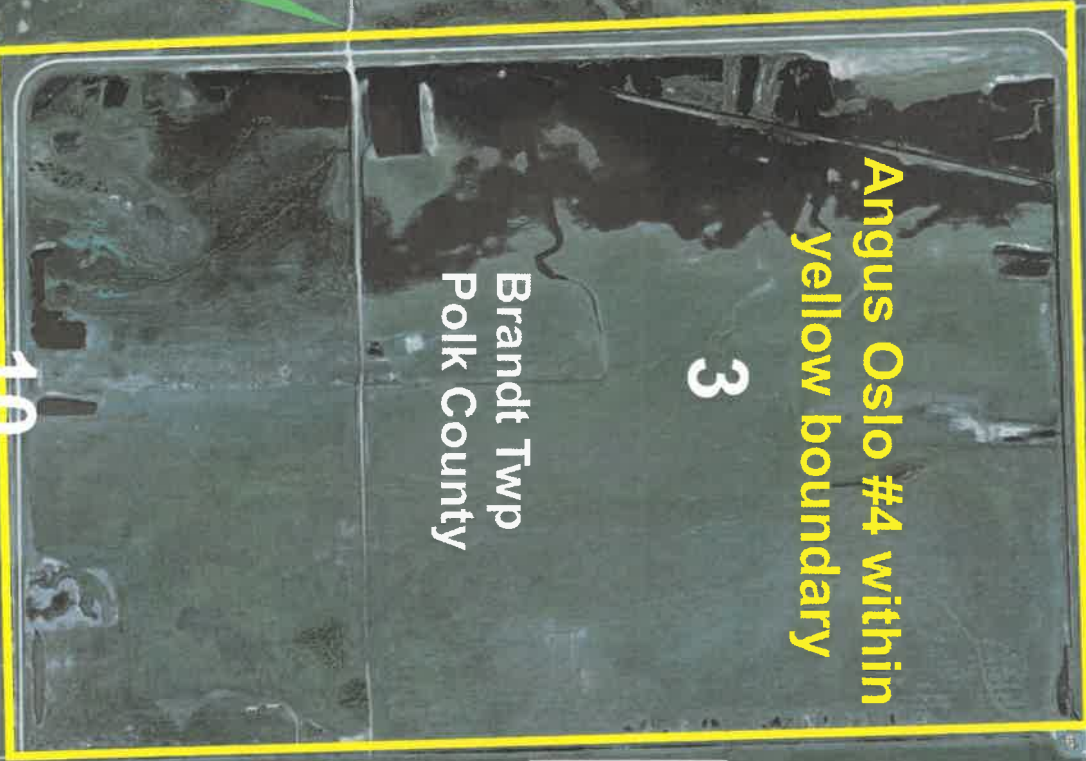


160 St NW

240 Ave

150 St NW

Angus 1 mile west, 1 mile south, 5 miles west



Angus Oslo #4 within yellow boundary

3

Brandt Twp
Polk County

230 Ave NW



No motorized vehicles allowed on property.

10

120 St NW

Angus 5.5 miles west, 2 miles north

240 Ave NW

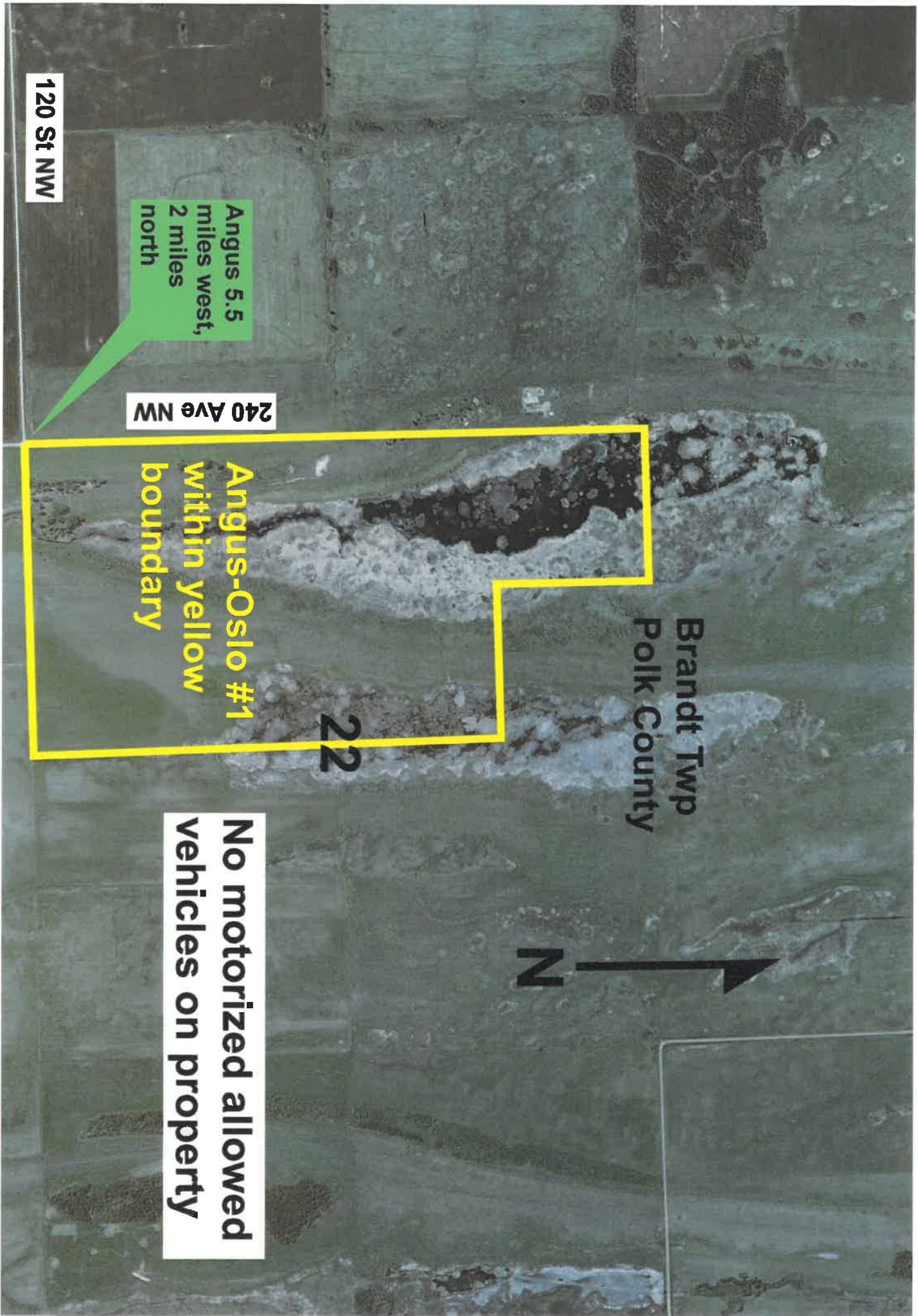
Angus-Oslo #1 within yellow boundary

22

Brandt Twp Polk County



No motorized allowed vehicles on property





Trail (in blue) NOT open to public

Brandt Angus Coulee Project access is within yellow line

No motorized vehicles permitted outside of Parking Areas

Angus 3.3 miles west

120 St NW

130 ST NW

270 Ave NW

260 Ave NW

Gated

Gated

Parking Areas

Parking Area

DIKE

18

19

Brandt Twp Polk County

N

23

Marshall County

Polk County

10

11

12

15

South side of center of Snake River

Sandsville Twp
Polk County

Stay off of north side of River

March property within yellow boundary

14

Warren 2 miles north, 6 miles east

No motorized vehicles allowed on property.

66

