

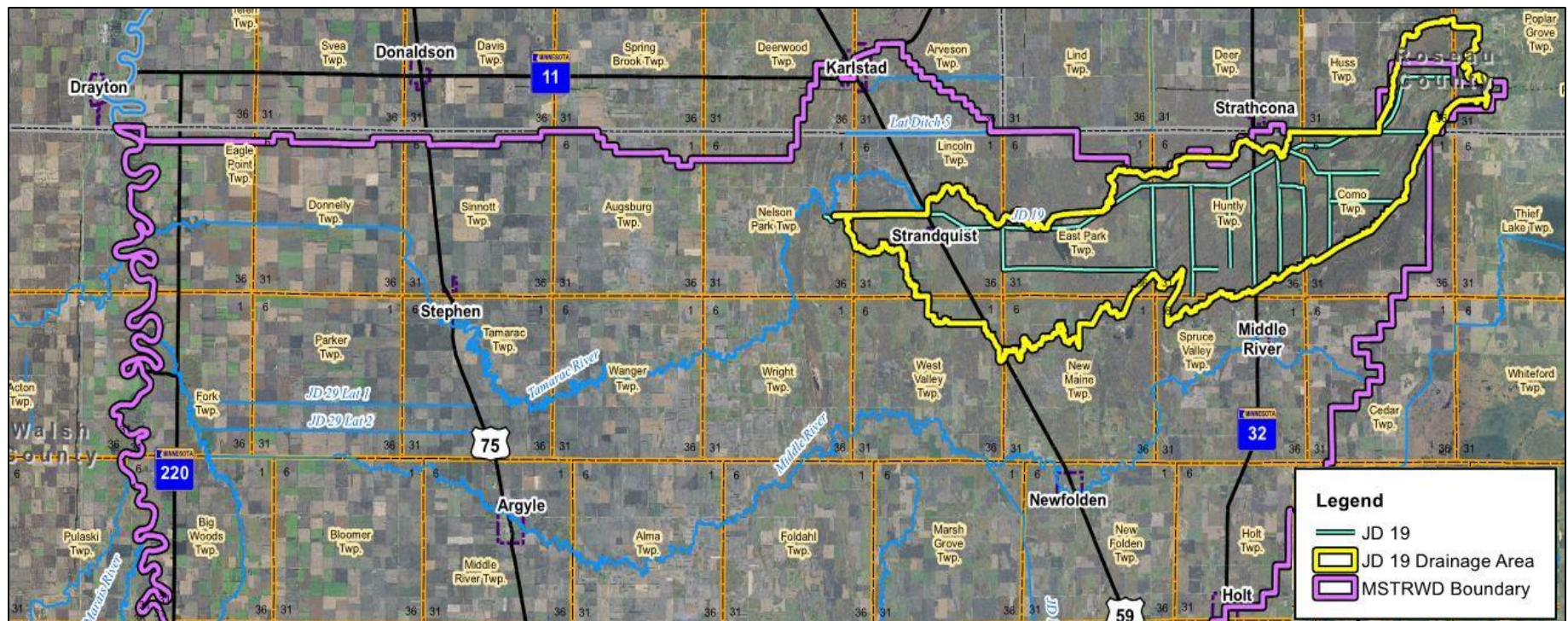
Middle-Snake-Tamarac Rivers Watershed District

Judicial Ditch #19 Watershed

Regional Conservation Partnership Program (RCPP)

Public Scoping Meeting

September 26, 2016



Judicial Ditch #19 Watershed Public Scoping Meeting OBJECTIVES

1. Review Tamarac Project Work Team Progress
2. Overview - PL566 Planning process
3. Solicit Comments on the Resource Concerns
4. Inform Public of Future Steps

Judicial Ditch #19 Watershed Public Scoping Meeting AGENDA

1. Review Tamarac Project Work Team Progress
2. Introduce Study Area
3. Public Law 566 Planning Process Overview
4. Watershed Setting and Resource Concerns
5. Overview of Next Steps
6. Questions/Public Comment Period

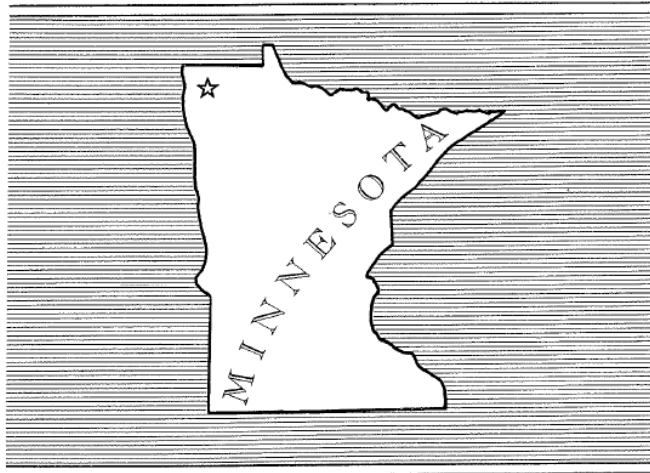
Review Tamarac Project Work Team Progress

1965 PL-566 Work Plan

WORK PLAN
FOR WATERSHED PROTECTION AND FLOOD PREVENTION

TAMARAC RIVER WATERSHED

Marshall, Kittson, Roseau Counties, Minnesota



WATERSHED WORK PLAN

TAMARAC RIVER WATERSHED

Marshall, Kittson and Roseau Counties, Minnesota

Prepared Under the Authority of the
Watershed Protection and Flood Prevention Act
(Public Law 566, 83rd Congress, 68 Stat. 666)
As Amended

Prepared By

Marshall County Soil Conservation District

Village of Stephen, Minnesota

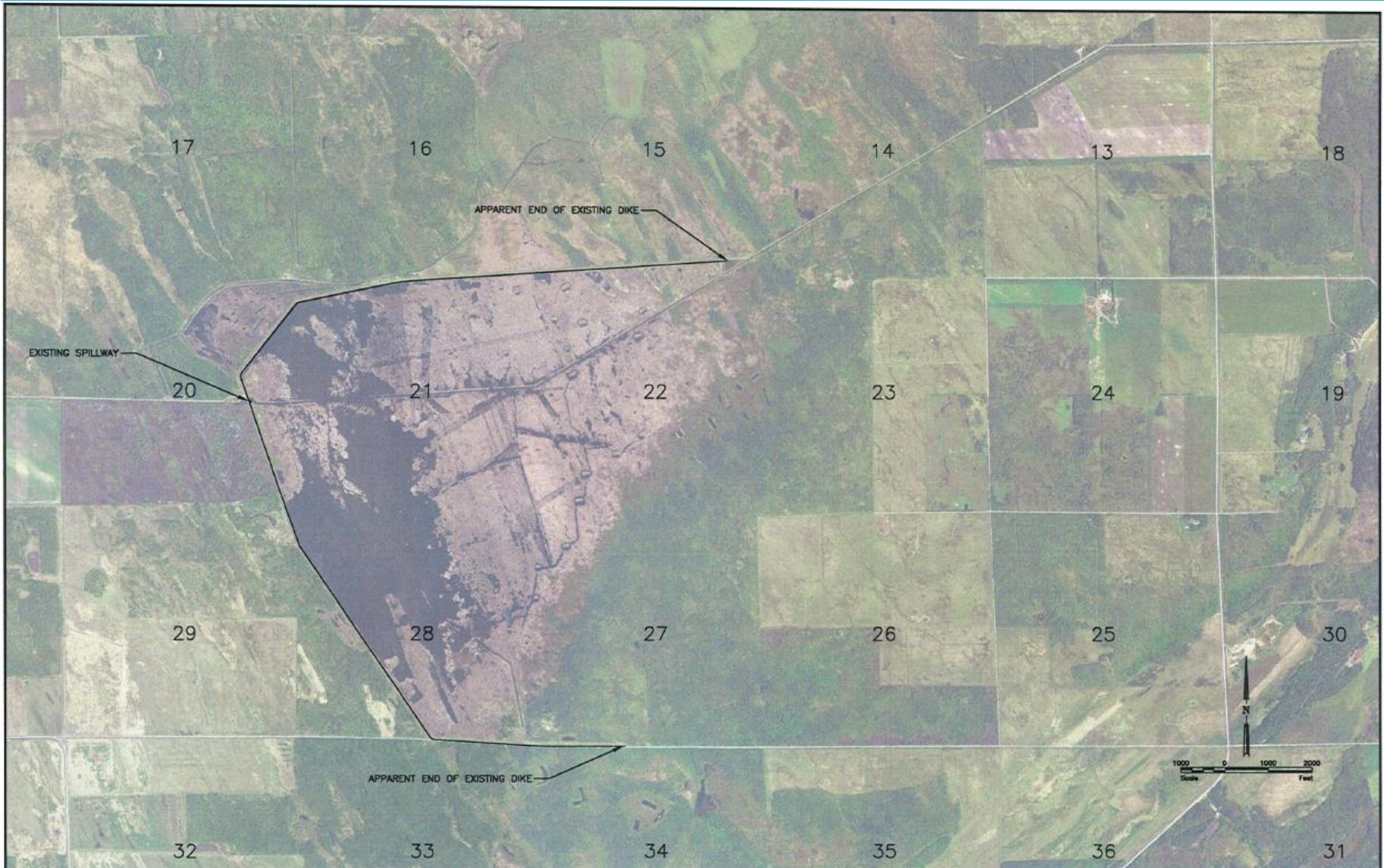
Assisted By

U. S. Department of Agriculture, Soil Conservation Service
U. S. Department of Agriculture, Forest Service
U. S. Department of Interior, Fish and Wildlife Service
Minnesota Department of Conservation

April 1965



Existing Plan View East Park WMA



No.	Revision	Date	By



Thie River Falls	Drawn by	Date
P: [218.681.2951] F: [218.681.2987]	TAN	2-11-14
	Checked by	Scale
	RIJH	AS SHOWN

EAST PARK LEVEE
MIDDLE-SNAKE-TAMARAC RIVER WATERSHED DIST.
WARREN, MINNESOTA

EXISTING PLAN VIEW
EAST PARK SITE
PROJECT NO. 3429-014

SHEET
1 of 2

Florian & East Park Selected Info (1965 Workplan)

	Florian		East Park	
Drainage Area (sq mi)	197.31		70.06	
Storage Capacity (ac-ft)	(ac-ft)	inches	(ac-ft)	inches
Sediment	125	0.012	71	0.019
Recreation	172	0.016	0	0.000
Wildlife	0	0.000	3329	0.891
Flood Water	800	0.076	4520	1.210
Total	1097	0.104	7920	2.121
Between High & Low Stages	379	0.036	2290	0.613
Surface Area (acres)	(acres)		(acres)	
Sediment	26		150	
Recreation	50		0	
Wildlife	0		1720	
10 yr Freq Pool	76		2000	
Design Freq Pool	104		2310	
Volume of Fill (embankment) (cy)	35097		229584	
Elevation Top of Dam (ft 1929 MSL)	929.1		1104.9	
Max Height (ft)	31.6		14.9	

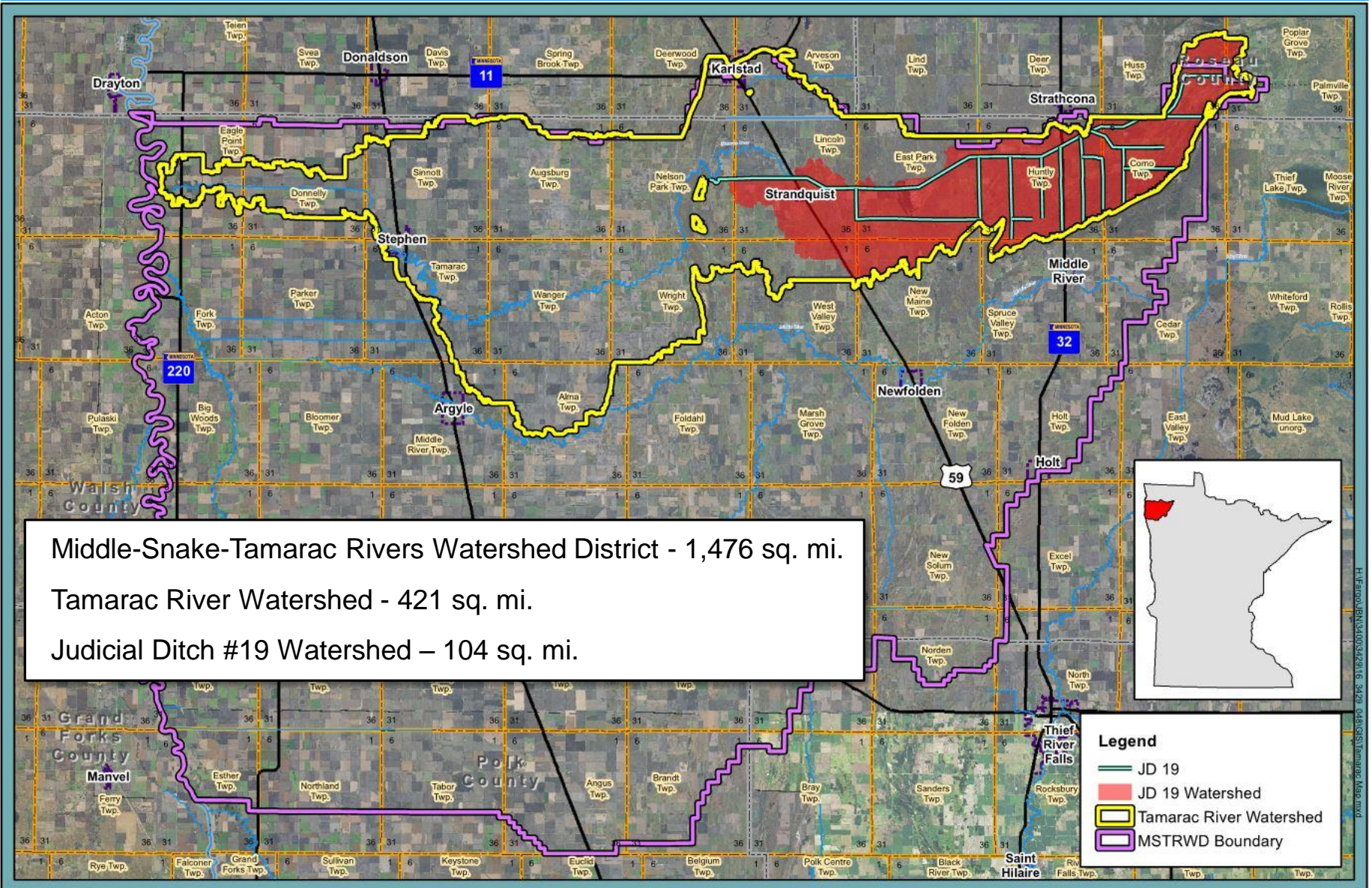
Tamarac River PWT Review

- PWT Focused Mainly on East Park WMA (Nelson Slough)
 - Expansion/Modification/Repair
 - Alternatives Discussed & Analyzed
- City of Stephen – 100 Year Flood Plain
- Stream Erosion – Tamarac River Watershed Area
- No Purpose and Need Identified

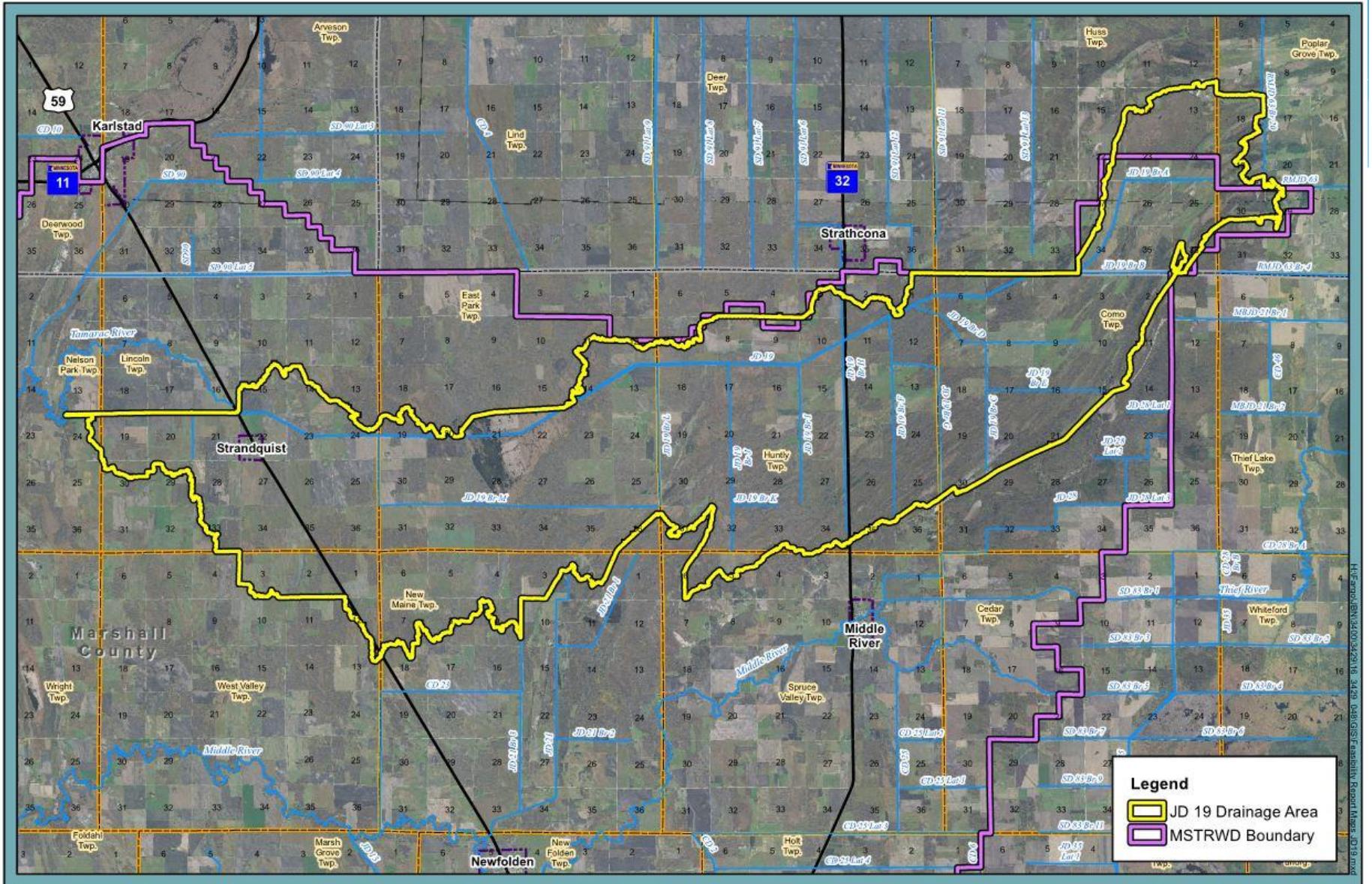
Regional Conservation Partnership Program (RCPP)

- 2014 Farm Bill
- Red River Retention Authority awarded \$12M
- RRRRA approved 20 Watershed Planning Efforts
 - 12 Minnesota, 8 North Dakota
- MSTRWD entered into Cooperative Agreements with NRCS
 - Judicial Ditch #19 and Judicial Ditch #14

Study Area



Study Area



RCCP Planning Process

INITIATE PLANNING

- * Discuss purpose and need for project with sponsors/Initiate study.

Step 1 - IDENTIFY PROBLEMS, OPPORTUNITIES & CONCERNS

- * Identify the need for the proposed action (quantify, extent, magnitude, timing, frequency etc.)

Step 2 - DETERMINE OBJECTIVES

- * Write purpose and need statement and Write scope of plan-EA/EIS

Step 3 - INVENTORY RESOURCES

- * Conduct detailed resource inventories and watershed assessment
- * Economics, social effects, Archeological and historic resources
- * Engineering/Geology/Support maps
- * Document problems

Step 4 - ANALYZE RESOURCE DATA

- * Geology, Hydrology & Hydraulics, Cultural, Economics and Social

Step 5 - FORMULATE ALTERNATIVES

- * Develop reasonable alternatives, mitigation strategies and costs (Preliminary plans)

Step 6 - EVALUATE ALTERNATIVES

- * Env. Resources, Geotechnical, Hydrology & Hydraulics, Economics, Significance of effects,...

Step 7 - MAKE DECISIONS (EA/EIS, Public Involvement,...)

RCPP Planning Process - NEPA

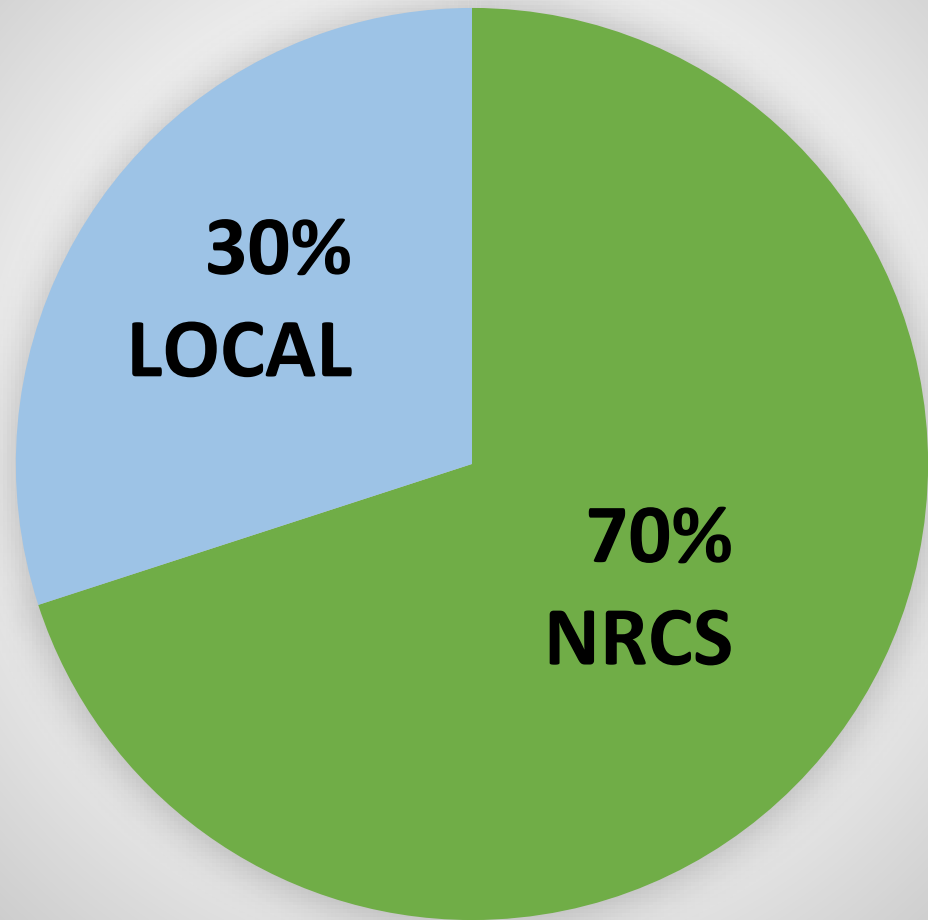
RCPP planning process will follow National Environmental Policy Act (NEPA) guidelines

- * 40 CFR 1506.6 – Public Involvement
- * Primary Goal
 - * Ensure all interested and affected parties are aware of the proposed action

(a) “make diligent efforts to involve the public in preparing and implementing their NEPA procedures.”

Why RCPP?

COST SHARE BREAKDOWN



Watershed Setting and Known Resource Concerns

The slide features a solid blue background. At the bottom, there are several overlapping, wavy, light blue shapes that create a sense of movement or a horizon line.

Problems – Flooding/Flood Damages



Como Twp. Agriculture Field Flooding



Natural Resource and Water Quality Concerns

- * Channel instability
- * Lack of riparian buffers
- * Degradation and loss of existing grassland and wetland habitats (ex. CRP conversion)
- * Soil erosion (wind and water) from upland sources
- * Degraded soil health

Problems

- * East Park WMA (Nelson Slough)
 - * Capacity/Operation/Outlet
 - * Sandbagging Overflows in 1997
- * JD #19 Channel Instability
 - * Water Quality/Erosion/Sediment



June 3 - JD 19 To east, Sec line 24/19
Lincoln/E A Park

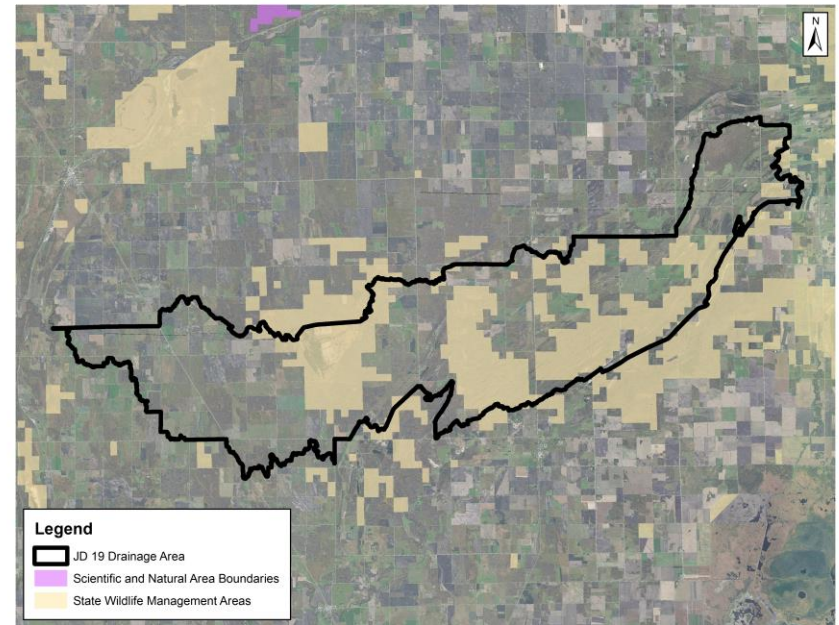


Natural Resource Goals

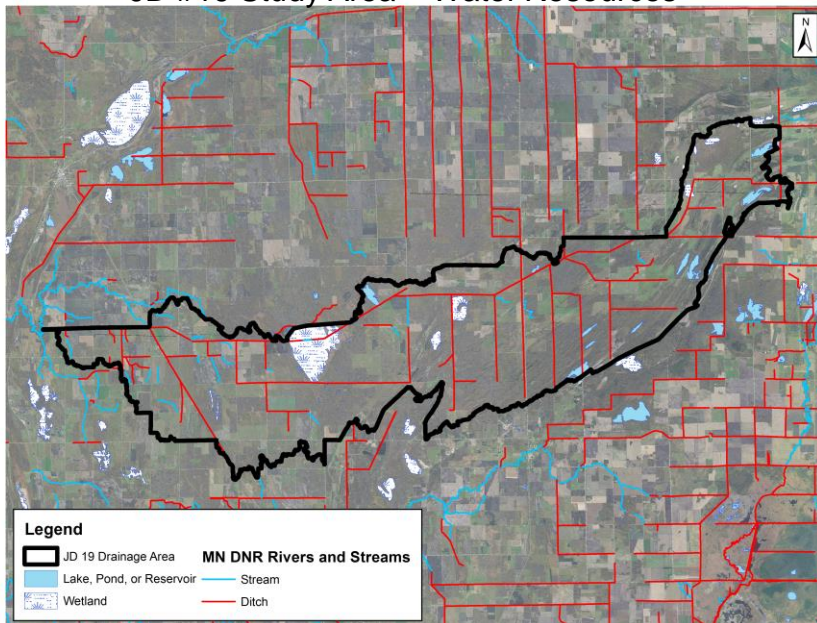
Middle-Snake-Tamarac Rivers Watershed 10-yr Plan (2011)

- * Restore and protect unique ecological values and recreational opportunities within the district
- * Maintain/improve water quality of rivers, streams, lakes, and groundwater resources.
- * Protect wetlands and channels from sedimentation, and maintain the soil productivity of ag lands with the district
- * Promote district goals to residents within the district as well as local, state, and federal agencies.

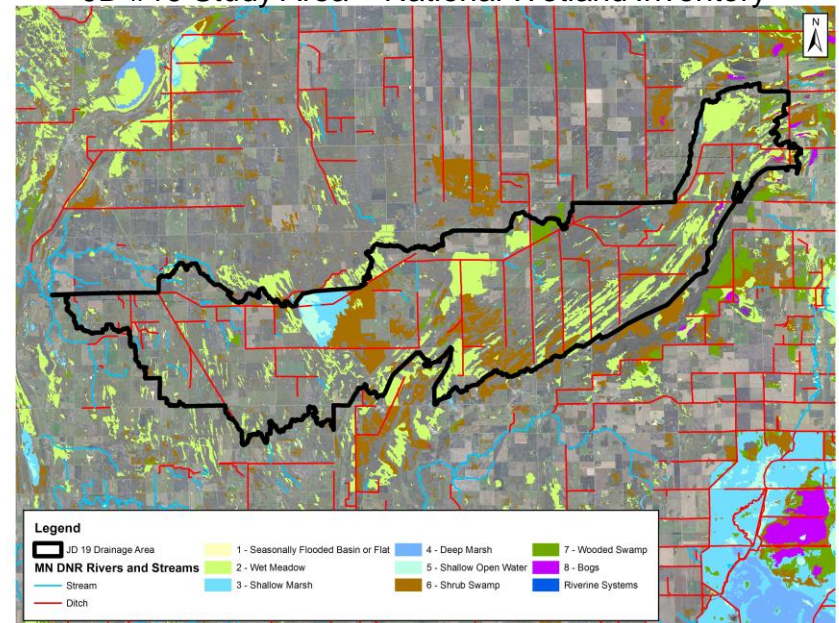
JD #19 Study Area – Public Land Resources



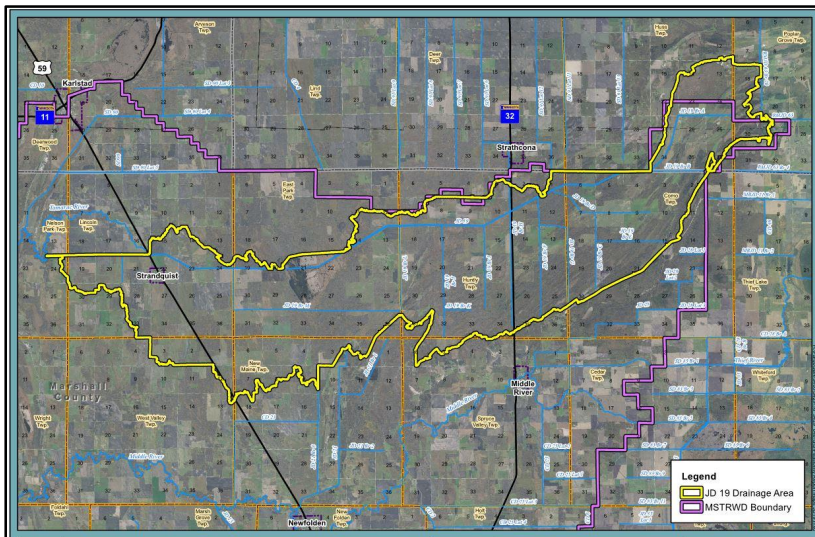
JD #19 Study Area – Water Resources



JD #19 Study Area – National Wetland Inventory



Overview of Next Steps



RCPP Planning Process

INITIATE PLANNING

- * Discuss purpose and need for project with sponsors/Initiate study.

Step 1 - IDENTIFY PROBLEMS, OPPORTUNITIES & CONCERNS

- * Identify the need for the proposed action (quantify, extent, magnitude, timing, frequency etc.)

Step 2 - DETERMINE OBJECTIVES

- * Write purpose and need statement and Write scope of plan-EA/EIS

Step 3 - INVENTORY RESOURCES

- * Conduct detailed resource inventories and watershed assessment
- * Economics, social effects, Archeological and historic resources
- * Engineering/Geology/Support maps
- * Document problems

Step 4 - ANALYZE RESOURCE DATA

- * Geology, Hydrology & Hydraulics, Cultural, Economics and Social

Step 5 - FORMULATE ALTERNATIVES

- * Develop reasonable alternatives, mitigation strategies and costs (Preliminary plans)

Step 6 - EVALUATE ALTERNATIVES

- * Env. Resources, Geotechnical, Hydrology & Hydraulics, Economics, Significance of effects,...

Step 7 - MAKE DECISIONS (EA/EIS, Public Involvement,...)

Watershed Planning Timeline

1-3 Months

- * Plan of Work
- * Develop Team
- * Feasibility Report
- * Define Concerns
- * **Public Meeting**
- * Field Survey
- * Begin H&H

3-6 Months

- * Purpose & Need
- * Scope EA
- * Field Survey
- * Ex. H&H Modeling
- * Field Inventory
- * Begin Economics

6-12 Months

- * Finalize Ex. H&H
- * Without Project Conditions
- * Economics:
- * Preliminary Alternative Screening
- * Preliminary Cultural Review

12+ Months

- * Alternative Screening
- * Geotech
- * Impacted Lands
- * Alternatives for Detailed Study
- * H&H Alternatives
- * Detailed Survey, Geotech, Design

Questions/Comments/ Form Completion

Public Input

Middle-Snake-Tamarac Rivers Watershed District
Public Scoping Meeting Comment Form
Judicial Ditch #19
NRCS Watershed Plan
 September 26, 2016

Background

The Middle-Snake-Tamarac Rivers Watershed District (MSTRWD) secured funding through the Red River Retention Authority for Watershed Planning under the Regional Conservation Partnership Program (RCPP), administered by the Natural Resources Conservation Service (NRCS). The RCPP funding was made available for watershed planning in the Judicial Ditch #19 Watershed and it is required to follow Public Law 83-566 requirements.

The Watershed Planning must also comply with the National Environmental Protection Act (NEPA) requirements. Tasks required for the NRCS Watershed Plan are described in the *Feasibility Study and Plan of Work* document, and generally include: Identifying a Purpose and Need, developing an Environmental Assessment, Identifying the Affected Environment (resource problems), Developing Alternatives, Identifying Environmental Consequences of the alternatives, determining a Preferred Alternative, and creating an overall Watershed Plan. Public participation will be a vital component throughout the entire planning process, beginning with this public meeting.

Purpose of Today's Meeting

The initial step in NRCS Watershed Planning, as directed by NEPA, is to allow for input from all interested parties including federal, state, and local agencies and other interested groups or persons. Initial input will be focused on resource concerns in and adjacent to the Judicial Ditch #19 Watershed. In order to gather input on resource concerns, we would request that the attached comment form be completed and provided to the MSTRWD.

Identified Resource Concerns:

- **Flooding/Flood Damages** (i.e. agricultural effects from delayed planting, prevented planting, crop flood inundation, road damages, culvert/bridge damages, breakout flows, field erosion/deposition, floodplain management, etc.)
- **Water Quality/Erosion and Sedimentation** (water quality, water resources, soil resources, field erosion/deposition, channel erosion/deposition, etc.)
- **Wildlife and Habitat** (Fish and wildlife, wetlands, endangered and threatened species, invasive species, migratory birds, forest resources, etc.)
- **Other**

Please fill out the following information based on your priorities for the Judicial Ditch #19 Watershed.

Comment forms will be accepted for all forms postmarked on or before **October 31, 2016**.

Completed comment forms can be mailed to the MSTRWD office at:

Middle-Snake-Tamarac Rivers Watershed District
 PO Box 154
 Warren, MN 56762

Or via email to brent.silvis@mstrwd.org

Name: _____

Phone Number: _____

Email Address: _____

Mailing Address: _____

Would you like to receive project updates and be added to the contact list? YES NO

Affiliation: _____

(agency, resident, commissioner, mayor, etc...)

Circle the most appropriate ranking for each concern listed below. Refer to the KEY for definitions of each ranking. Concerns where the degree of concern is not indicated will be considered a zero value (No Concern or Not Relevant).

KEY: 0 = No Concern or Not Relevant 1 = Minimal Concern 2 = Minor Concern
 3 = Moderate Concern 4 = Significant Concern 5 = Severe Concern

<u>Concerns for Project Scoping:</u>	No Concern					Severe Concern					
• Flooding/Flood Damages.....	0	1	2	3	4	5					
• Water Quality/Erosion and Sedimentation.....	0	1	2	3	4	5					
• Wildlife and Habitat.....	0	1	2	3	4	5					
• Others (Please describe in comment section).....	0	1	2	3	4	5					

Additional Comments: _____

Public Input

Identified Resource Concerns:

- **Flooding/Flood Damages** (i.e. agricultural effects from delayed planting, prevented planting, crop flood inundation, road damages, culvert/bridge damages, breakout flows, field erosion/deposition, floodplain management, etc.)
- **Water Quality/Erosion and Sedimentation** (water quality, water resources, soil resources, field erosion/deposition, channel erosion/deposition, etc.)
- **Wildlife and Habitat** (Fish and wildlife, wetlands, endangered and threatened species, invasive species, migratory birds, forest resources, etc.)
- **Other**

state, and local agencies and other interested groups or persons. Input will be focused on resource concerns in and adjacent to the Judicial Ditch #19 Watershed. In order to gather input on resource concerns, we would request that the attached comment form

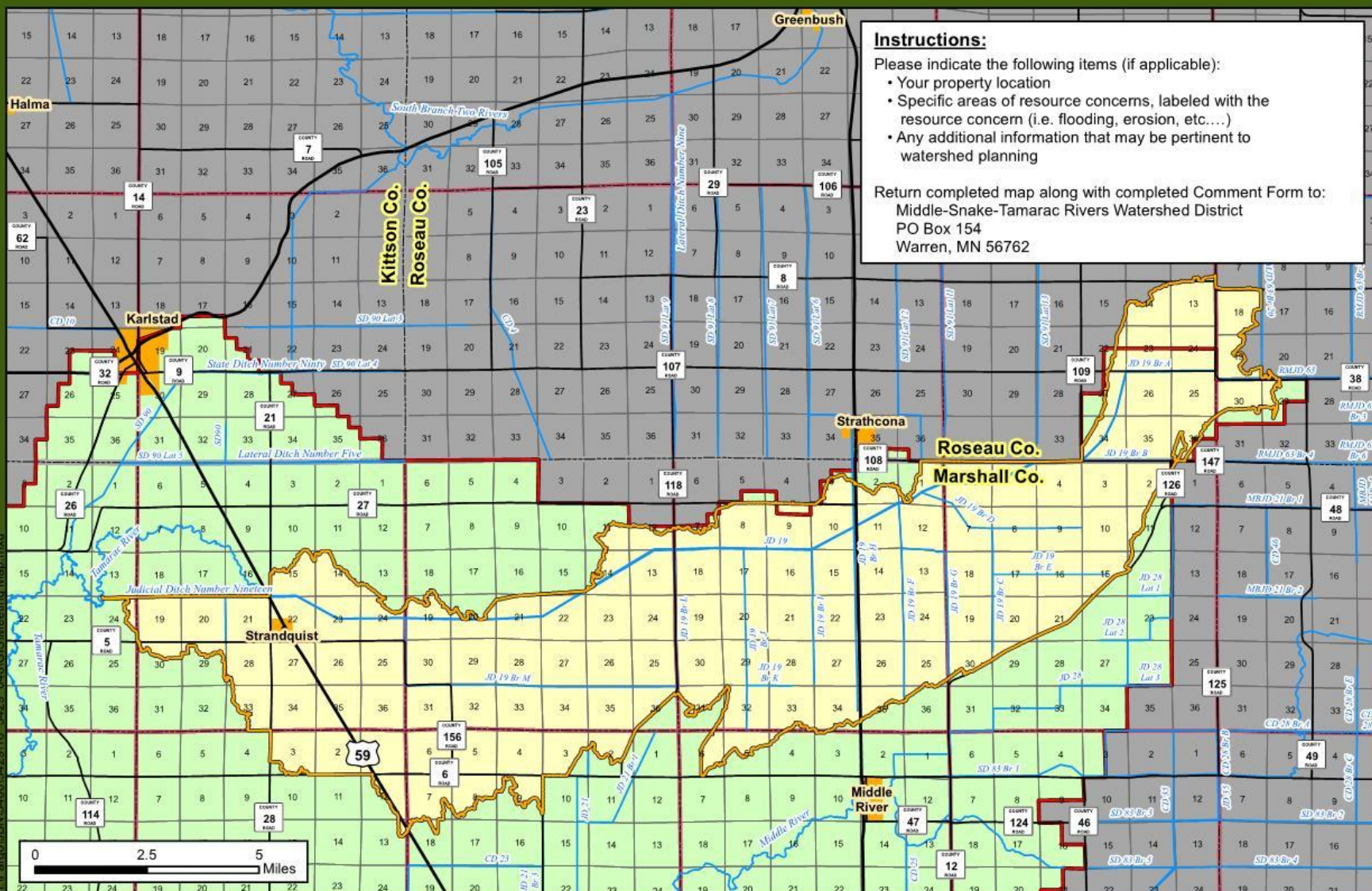
KEY: 0 = No Concern or Not Relevant 1 = Minimal Concern 2 = Minor Concern

Circle the most appropriate ranking for each concern listed below. Refer to the KEY for definitions of each ranking. Concerns where the degree of concern is not indicated will be considered a zero value (No Concern or Not Relevant).

KEY: 0 = No Concern or Not Relevant 1 = Minimal Concern 2 = Minor Concern
 3 = Moderate Concern 4 = Significant Concern 5 = Severe Concern

Concerns for Project Scoping:

	No Concern					Severe Concern
• Flooding/Flood Damages.....	0	1	2	3	4	5
• Water Quality/Erosion and Sedimentation.....	0	1	2	3	4	5
• Wildlife and Habitat.....	0	1	2	3	4	5
• Others (Please describe in comment section).....	0	1	2	3	4	5



Instructions:

- Please indicate the following items (if applicable):
- Your property location
 - Specific areas of resource concerns, labeled with the resource concern (i.e. flooding, erosion, etc....)
 - Any additional information that may be pertinent to watershed planning

Return completed map along with completed Comment Form to:
 Middle-Snake-Tamarac Rivers Watershed District
 PO Box 154
 Warren, MN 56762

Middle-Snake-Tamarac Rivers Watershed District

Judicial Ditch #19
 Watershed Planning
 Public Comment Form

- JD #19 Watershed
- MSTRWD Boundary
- Rivers and Streams

- County Boundary
- Township Boundary
- City Limits



Prepared By:



H:\Farrol\IBN\3400\3429\16_3429_04\GIS\MapInfo_Map.mxd

Questions