

Do not walk on the north side of the middle of the trail in this area. The landowner will not allow it

Red Gate

260 St NW

OCSS within yellow boundary

DIKE

15

Comstock Twp Marshall County

Snake River

14

No motorized vehicles allowed on property

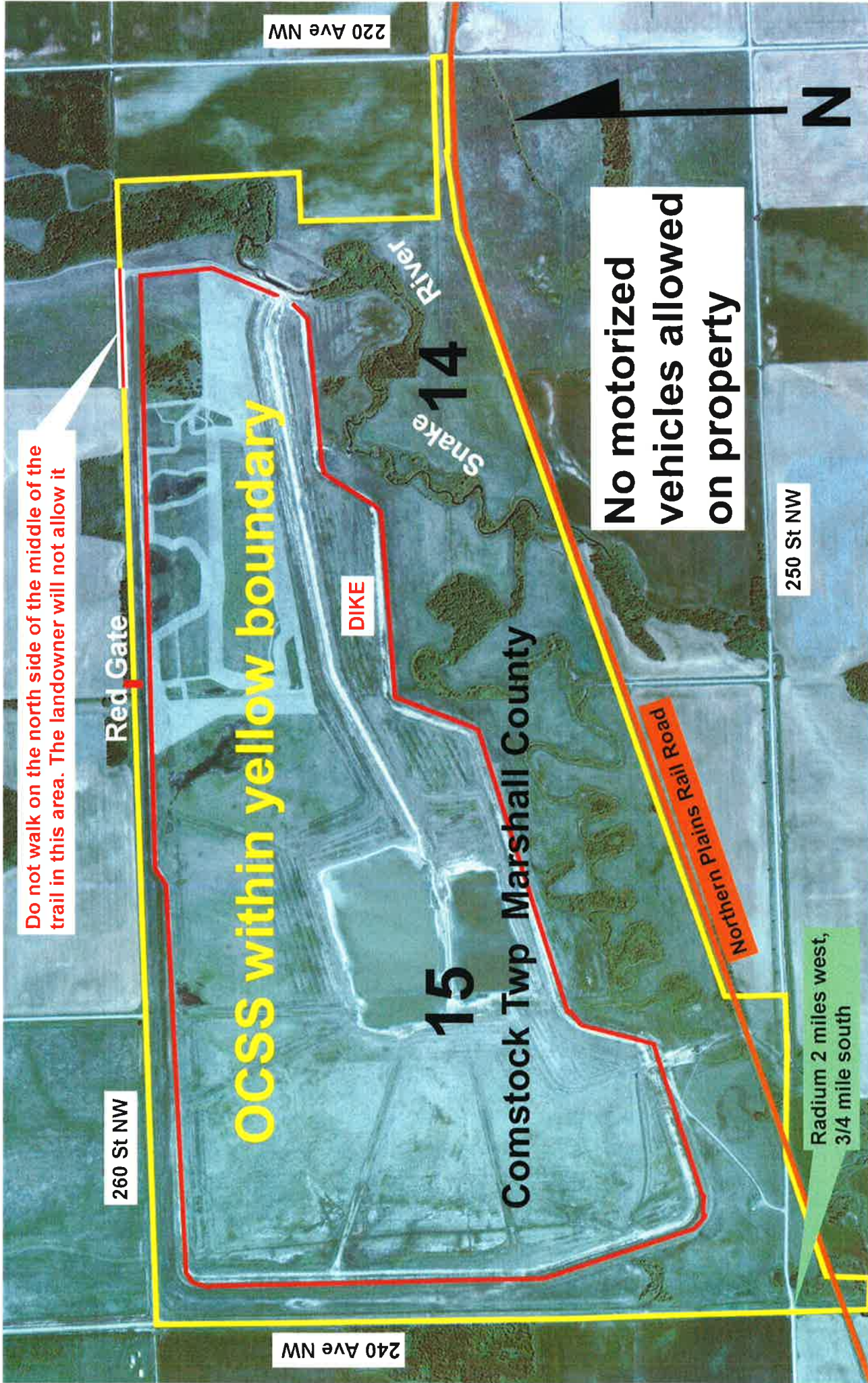
250 St NW

Northern Plains Rail Road

Radium 2 miles west, 3/4 mile south

240 Ave NW

220 Ave NW



Warren 1 mile north, 5 miles west

210 St NW

36

Comstock Strip Twp

McCrea Strip Twp

Marshall County

Polk County

7

Agassiz Valley
within yellow
boundary

12

200 St NW

Brislet Twp

Helgeland Twp

18

13

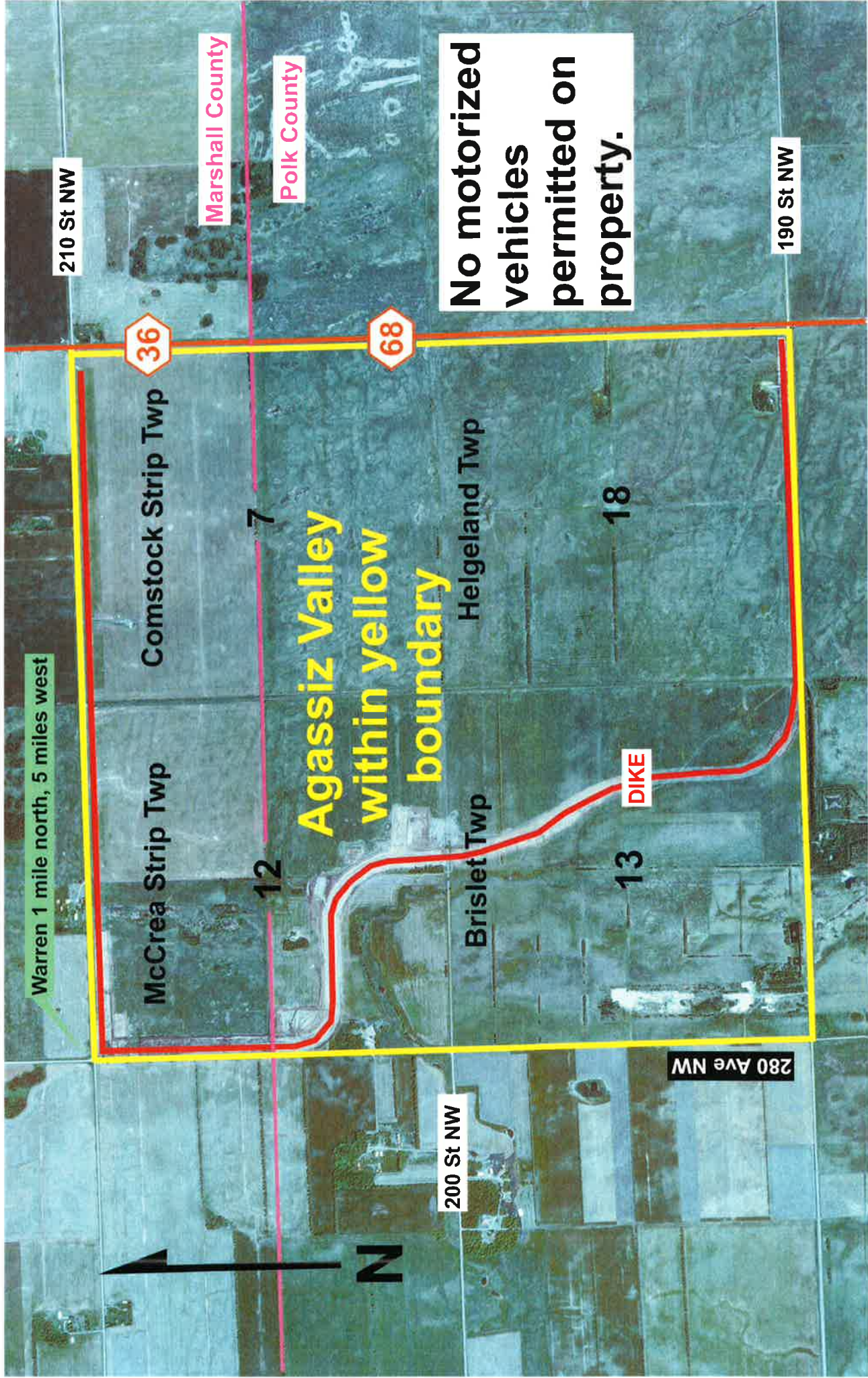
DIKE

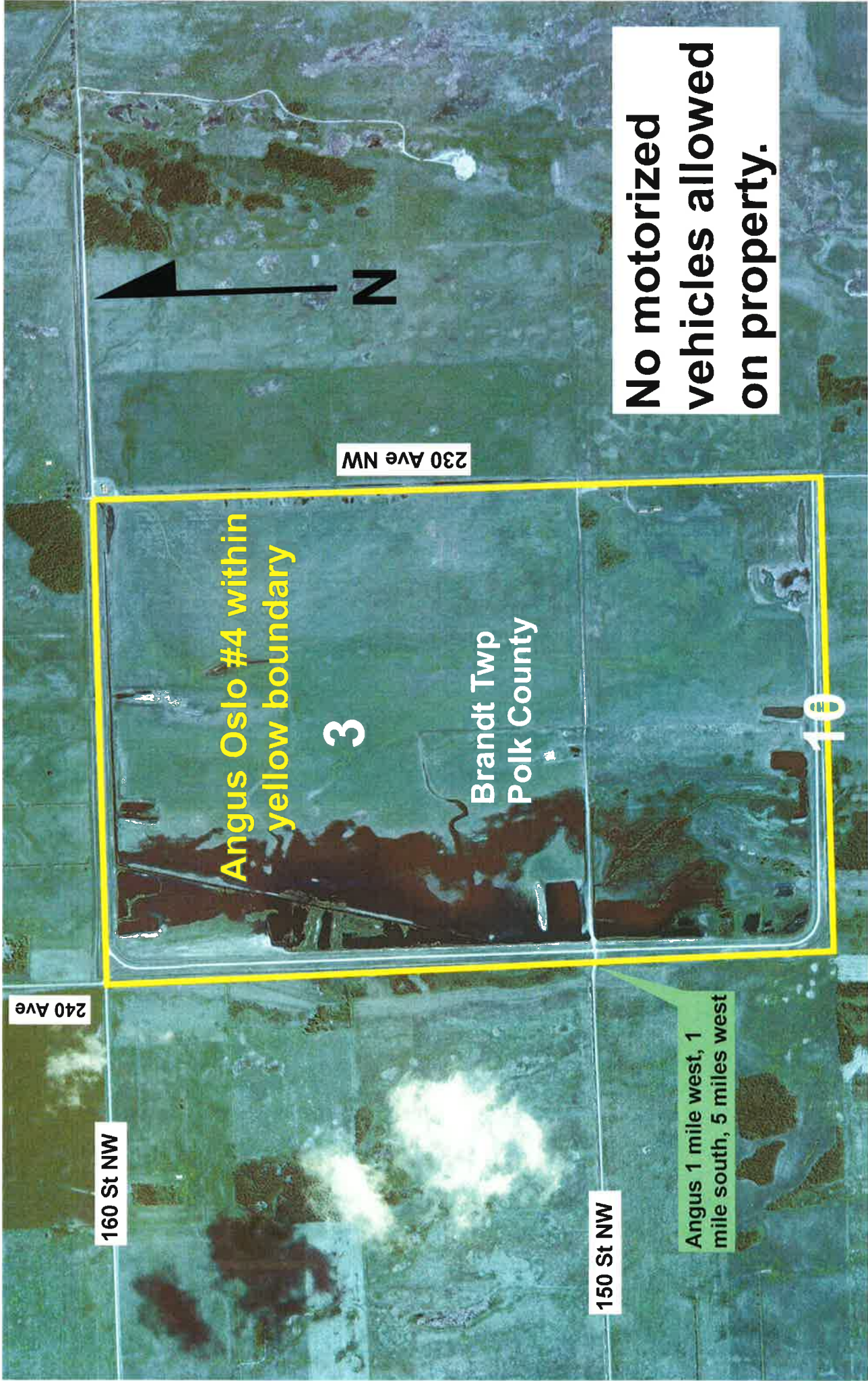
No motorized
vehicles
permitted on
property.

190 St NW

68

280 Ave NW





160 St NW

240 Ave

230 Ave NW

150 St NW

Angus 1 mile west, 1 mile south, 5 miles west

Angus Oslo #4 within yellow boundary

3

Brandt Twp
Polk County

No motorized vehicles allowed on property.

10





Brandt Twp
Polk County

22

No motorized allowed
vehicles on property



Angus-Oslo #1
within yellow
boundary

240 Ave NW

Angus 5.5
miles west,
2 miles
north

120 St NW



No motorized vehicles permitted outside of Parking Areas

23

Angus 3.3 miles west

18

DIKE

Parking Area

Brandt Angus Coulee Project access is within yellow line

DIKE

19

Brandt Twp Polk County

270 Ave NW

Parking Areas

130 St NW

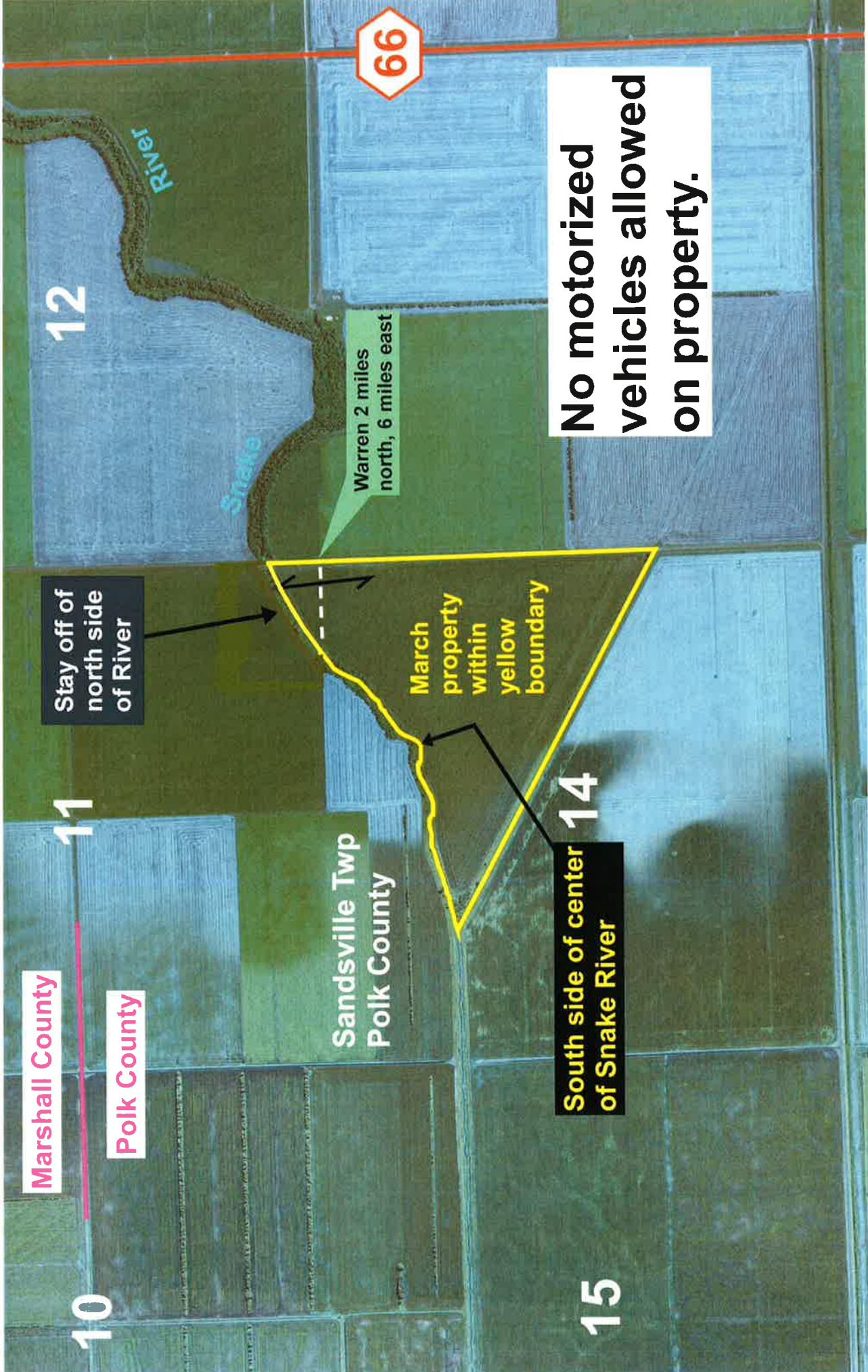
Gated

Trail (in blue) NOT open to public

Gated

120 St NW

N



Marshall County

Polk County

Sandsville Twp
Polk County

South side of center
of Snake River

Stay off of
north side
of River

March
property
within
yellow
boundary

Warren 2 miles
north, 6 miles east

No motorized
vehicles allowed
on property.

66

12

11

14

10

15

River

Snake